

OECD 2024 ONCOLOGY DAYS

WG Cancer Economics Session

June 12th

14.00 - 16.00

Hotel Presidentti

In the session organized by the Cancer Economics Working group we start with a presentation of a comparative study presenting the savings through national agreements on drug access and coverage, on national level in at least 10 EU countries. In some we can present resulting price levels.

Further, the developments in data management of electronic patient records in hospitals to generate real world data that can be used for effectiveness research and health technology assessment will be shown using two case studies from the OncoValue project.

As early detection is becoming increasingly important, the economic consequences and demands for coverage decisions will further be elaborated using a case study concerning



Activities in 2023

- **Board** Lionel Perrier (Lyon), Michael Schlander (Heidelberg), Edit Pornecy (Budapest), Davide Gallegati (Meldola), Wim van Harten (Chair, Amsterdam) and Valesca Retèl (Coordinator, Amsterdam).
- **Meetings:** 3 Board meetings and 4 Working Group meetings with 20-30 participants (i.eekhout@nki.nl)
- **Cooperation in Research Projects:** Socio Economic Consequences, European Fair Pricing Network
- **European Projects participation:** CanHeal, CCI4EU, COST-Intercept, OncoValue



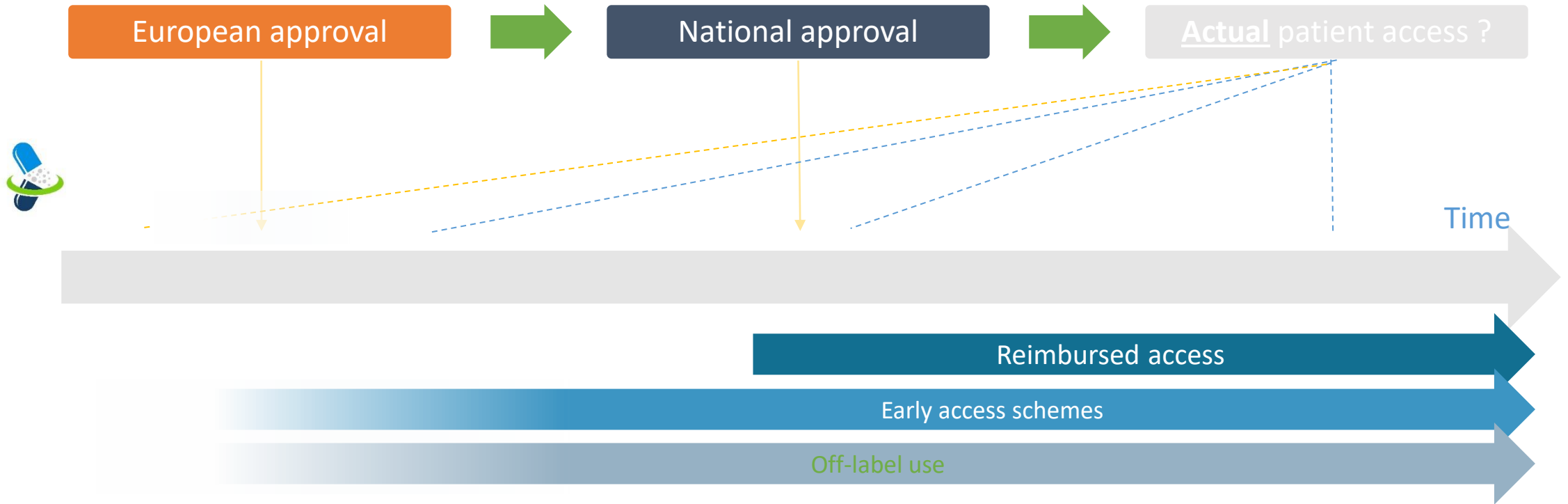
OECD 2024 Health Economics

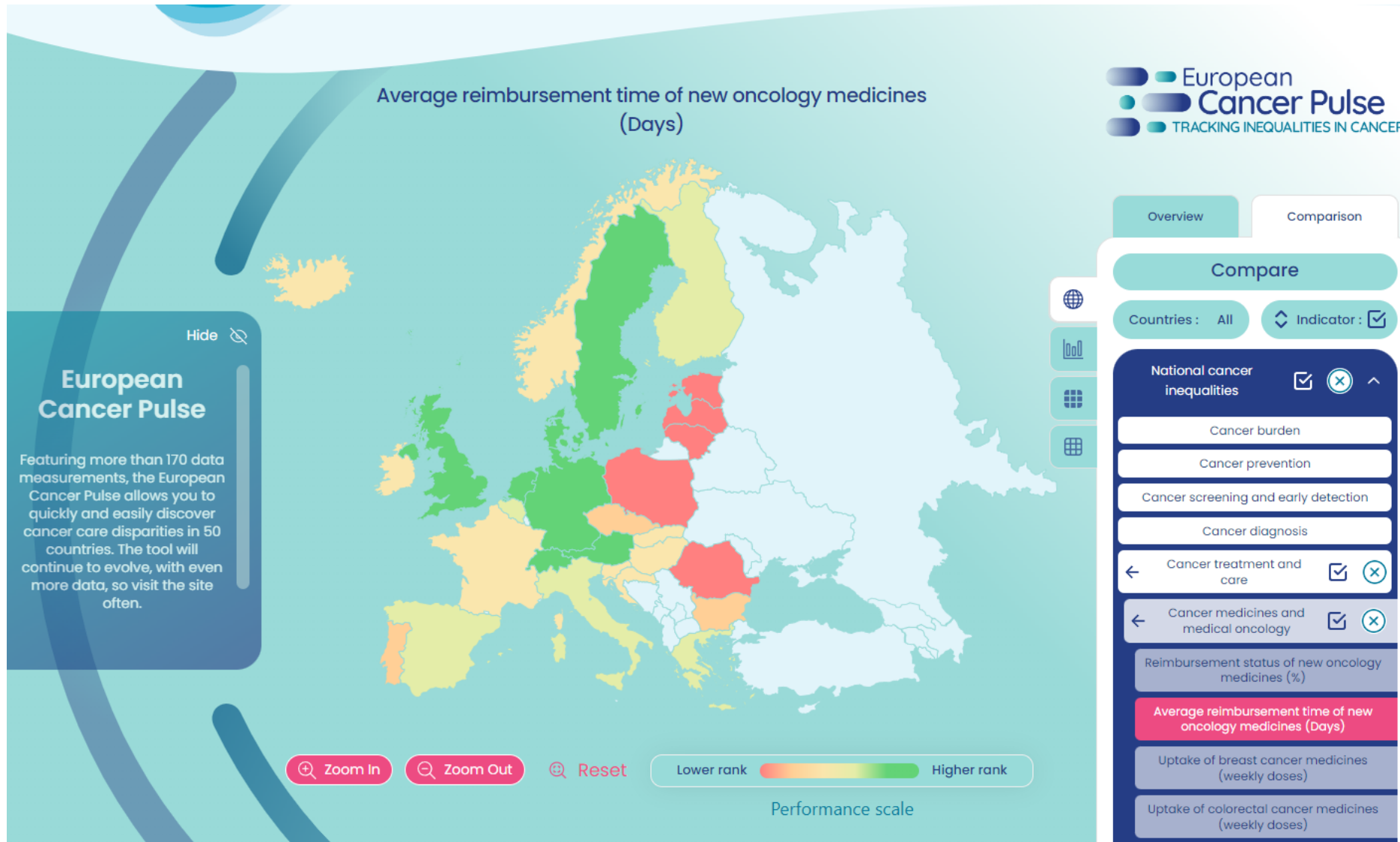
Reimbursement & Pricing policy:

- Economic burden for Health Systems and Hospitals, sometimes for patients
- Access issues in various European countries



Time to actual patient access





WG Cancer Economics; Access to treatment

In cooperation with the **European Fair Pricing Network**

- Transparency projects finalizing:
Country Specific Managed Entry Agreement Performance and Actual Drug Pricing differences.
- 2024-2025: Developing a Transparency and Equity Index, involving countries, treatments and pharma.
- 2024-2025: Exploring drug development (R&D) costs and improved purchasing policies



Hospital Based Real World Data

- Real world effectiveness can differ from trial based results.
- Increasingly drugs are introduced with surrogate endpoints or based on small numbered- and one armed studies.
- How to `mine` the ever increasing data bases/datalakes of hospitals?
- How to use these data to inform/strengthen HTA decisions?



Economic aspects of early detection

- Early detection and screening of high risk subgroups increasingly seen as way to treat patients less invasively and reduce burden of advanced tumours on health systems.
- Discussion on existing programs, Identification of High Risk subgroups, Effective diagnostic strategies.....
- Evidence based approaches needed

COST Intercept program



Setting the agenda?

THE LANCET
Oncology

☰

POLICY REVIEW | VOLUME 25, ISSUE 4, E152-E163, APRIL 2024 [Download Full Issue](#)

The socioeconomic impact of cancer on patients and their relatives: Organisation of European Cancer Institutes task force consensus recommendations on conceptual framework, taxonomy, and research directions

[Prof Michael Schlander, MD PhD](#)  *  • [Prof Wim van Harten, PhD MD](#) † • [Prof Valesca P Retèl, PhD](#) • [Phu Duy Pham, MSc](#) • [Julie M Vancoppenolle, MSc](#) • [Jasper Ubels, MSc](#) • et al. [Show all authors](#) • [Show footnotes](#)

Published: April, 2024 • DOI: [https://doi.org/10.1016/S1470-2045\(23\)00636-8](https://doi.org/10.1016/S1470-2045(23)00636-8) • [Check for updates](#)

Summary



WG Cancer Economics; SocioEconomic Impact

- Agenda setting paper in Lancet Oncology
- Papers on SocioEconomic Consequences in 15 EU countries (in review), on AYA subset and AYA SEI services (to be submitted soon), on validation of survey instruments (in preparation).
- Further activities in methods/survey development and guidance-&instrument development and evaluation.
- Lobby with EU Commission on program- and cancer mission priorities; opportunity for OECD to lead this topic as policy priority.



Costs, costeffectiveness and consequences of cancer treatment

Chairperson: Wim H. van Harten

Welcome

Wim H. van Harten (10')

Transparency of cancer medicine prices and - rebates

Sabine Vogler and Nora Franzen (30')

Oncovalue: Using Real World Data for Real World based Technology Assessment

Kevin Tittel and Zainab Al-Khayat (20')

Oncovalue-case study

Johanna Matson (20')

Health Technology Assessment of early detection for oral cancer

Lionel Perrier and Valesca Retel (20')

OEI Task Force Socio-Economic Impact: state of the art and progress

Michael Schlander (15')

Closing

Wim H. van Harten (5')

